



OAKLANDS FARM SOLAR PARK

Applicant: Oaklands Farm Solar Ltd

Environmental Statement

Appendix 12.1 – Recreation Questionnaire

January 2024

Document Ref: EN010122/APP/6.1/Appx 12.1

Revision: -

Planning Act 2008

Infrastructure Planning (Application: Prescribed Forms and Procedure) Regulations 2009 - 5(2)(a)



Oaklands Farm Solar Park - Environmental Statement Volume 3

Appendix 12.1: Recreation Questionnaire

Final report

Prepared by LUC

January 2024

Dear Sir/Madam,

I am writing in relation to the Oaklands Farm Solar Park proposal which is being developed by Oaklands Farm Solar Ltd. The scheme will involve construction and operation of a solar farm and associated infrastructure, including battery storage and connection to the grid, on farmland between Rosliston and Walton-on-Trent in South Derbyshire. The scheme is at scoping stage and comments have been received from the Planning Inspectorate (ref EN01022), along with a number of consultees such as South Derbyshire District and Derbyshire County Councils. Further information on the project is available at <https://www.baywa-re.co.uk/en/solar/oaklands-solar-farm>.

There are a number of Public Rights of Way (PRoW) in close proximity to the site. This includes local footpaths and bridleways, as well as the Cross Britain Way long distance footpath which runs through the site boundary (as shown on Figure 1).

Oaklands Farm Solar Ltd are currently developing the layout of the solar park ahead of applying for planning permission. LUC are undertaking an Environmental Impact Assessment (EIA) which will assess the impact of the proposed solar park on users of these PRoW. We are also looking into improvements that can be made to access and recreation across the site.

We are consulting your organisation to gather information on the use of the PRoW shown on Figure 1, in order to understand how the proposed development might affect the users of these routes. We would be grateful if you could answer the following questions:

Name of organisation: _____

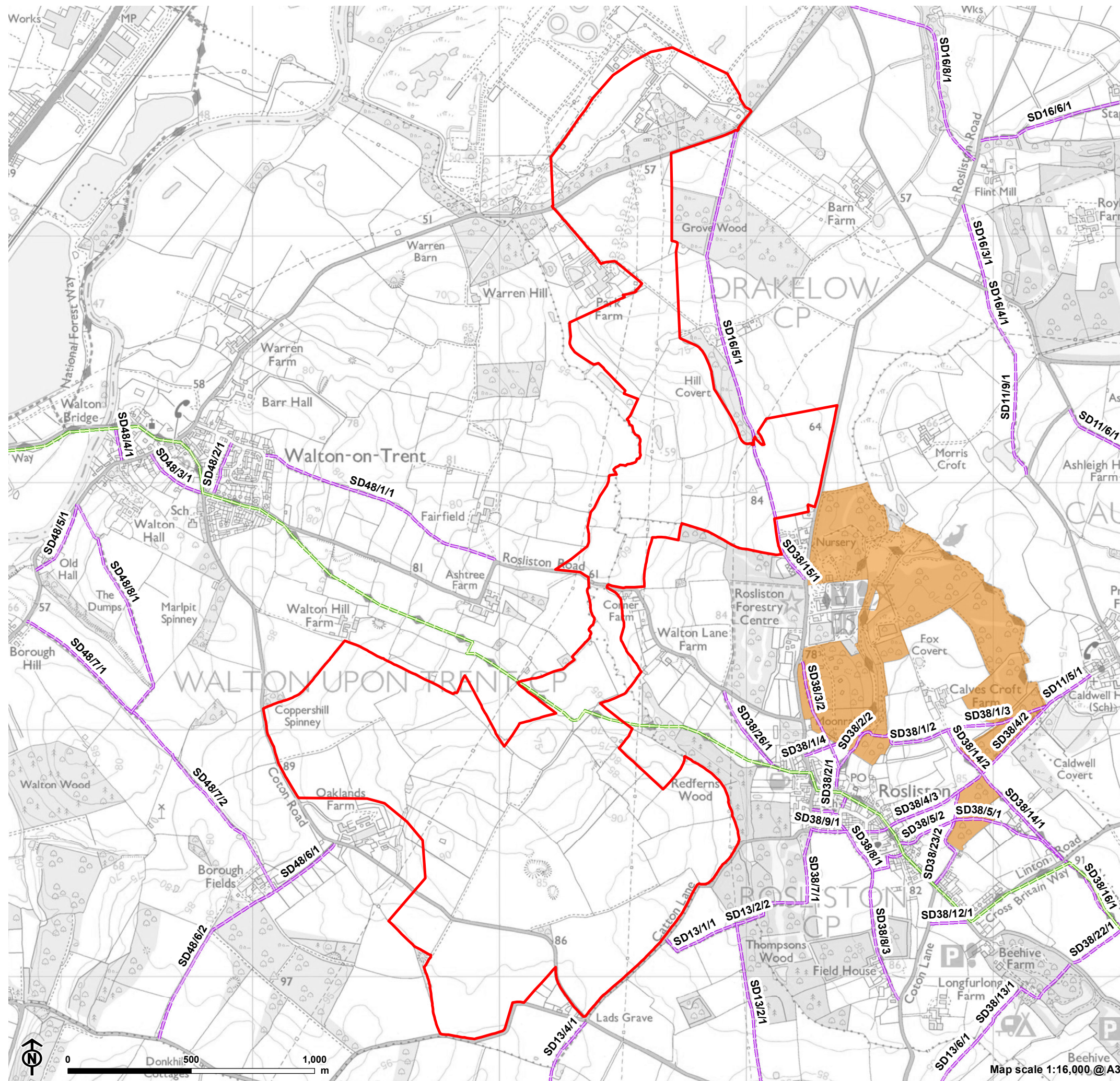
Number of members: _____

1. Does your organisation use any of the PRoW shown on Figure 1? Please refer to the references in Figure 1.
2. If so, how often do you use these routes? For example, every day, once a week, once a month, once a year etc.
3. What activities do you undertake on these routes (ie walking, cycling, horse riding etc)?
4. Do you currently experience any issues accessing the PRoW shown on Figure 1? If so, please explain where, and what the issue is.
5. Are there any areas where you feel improvements could be made to access and recreation in this area?

Please send your answers or any additional questions or comments you might have to info.oaklands-solarfarm@baywa-re.co.uk. We will analyse your responses and use this to inform the assessment of recreation in the EIA. There will be further opportunity for you to input to the proposal at future public consultation events in 2022, and through an online consultation hub which is being developed.

Thank you for your time.

Figure 1: PRoW within 1km of site boundary



- Scoping Boundary
- Cross Britain Way
- Public Rights of Way
- Access Land